

10. Proportional Valves

Proportional Pressure Control Valve

Type	Series	Cetop	Max. Flow (GPM)	Ports Max. Pressure		Linearity	Hysteresis	Repeatability	Page
				P, A, B (PSI)	T (PSI)				
Pressure Control	4VP01 / VP01 ¹	03	1.3	5000	3000	≤ 2.8%	≤ 3.0%	-	10 - 2
Pressure Reducing	4RP01	03	3.4	1500	-	-	≤ 3.0%	≤ 1.0%	10 - 3
Pressure Relief	R1EP01	03	2.6	5000	Tank	≤ 1.5%	≤ 1.0%	≤ 0.5%	10 - 4
Pressure Relief	R4VP	05/08/10	24...160	5000	Tank	≤ 1.5%	≤ 1.0%	≤ 0.5%	10 - 5

Proportional Directional Valve

Type	Series	Cetop	Max. Flow ² (GPM)	Ports Maximum Pressure			Without Position Feedback		With Position Feedback		Page
				P A, B (PSI)	T Ext. drain Int. drain (PSI)	Drain Ext. drain Int. drain	Response ³ 0→100% 100%→0 (ms)	Hysteresis Repeatability	Response ² 0→100% 100%→0 (ms)	Hysteresis Repeatability	
Direct	4DP01	03	7.9	5000	3000 / 2300	145 / 2300	40 / 25	≤5.0% / ≤3.0%	30 / 20	≤1.0% / ≤0.5%	10 - 6
Operated	4DP02 ⁴	05	21.1	4600	3500 / 2300	145 / 2300	60 / 40	≤5.0% / ≤2.0%	50 / 35	≤1.0% / ≤0.5%	
Pilot	4DP03	07	53	5000	3500 / 3000	3000 / -	50 / 50	≤5.0% / ≤3.0%	50 / 25	≤1.0% / ≤0.5%	10-10
Operated	4DP06	08	106	5000	3500 / 3000	3000 / -	60 / 70	≤5.0% / ≤3.0%	50 / 50	≤1.0% / ≤0.5%	

Proportional Flow Control Valve

Type	Series	Size	Max. Flow ⁵ (GPM)	Max. Pressure		Page
				A, B Ports (PSI)	Other ports (PSI)	
Throttle Valve	C1FP	16	53	5000	1500 (Y port)	10 - 14
		25	106			
		32	169			
		40	240			
Flange Mounted Flow Control	F5C	¾"	25	4000	500 (drain)	10 - 16
		1"	50			
		1 ¼"	100			

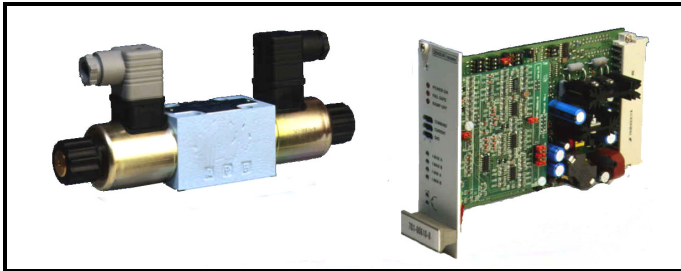
¹ See R4V/R4V...P2 and R5V/R5P...P2 : section 5.

² At 75 psi Δp per edge.

³ With 12 VDC coils.

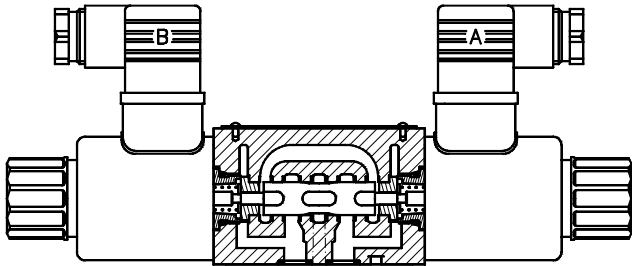
⁴ Contact Denison Hydraulics for availability.

⁵ At 150 psi Δp.



Proportional Pressure Reducing Valves

4RP01 Series (CETOP 03)
3.43 GPM - 1500 PSI



3. 4RP01-D-**16**-G12-D1-C1 Pressure Range

Pressure Range (PSI)	0...250	0...360	0...650
Cod	16	25	45

4. 4RP01-D-16-**G12**-D1-C1 Solenoid

12 VDC (recommended) ¹	G12
-----------------------------------	-----

5. 4RP01-D-16-G12-**D1**-C1 Design

6. 4RP01-D-16-G12-**D1**-C1 Seal Class

Buna N : Mineral oil	1
Viton : Mineral oil & Fire resistant fluids	5

7. 4RP01-D-16-G12-D1-**C1** Connectors included

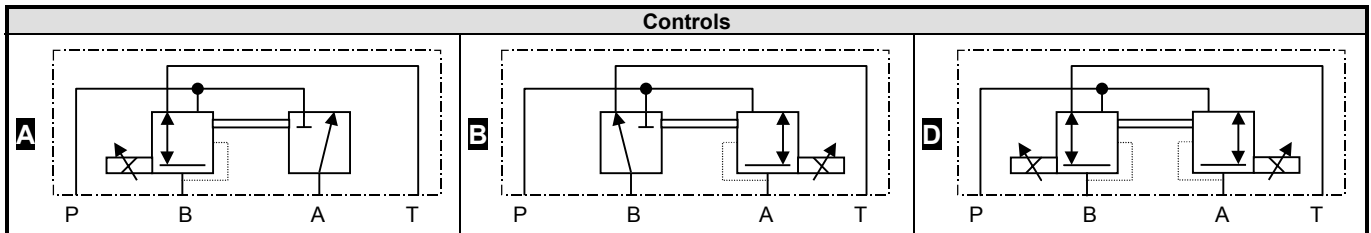
¹ 24 VDC available : consult Denison Hydraulics.

Key sheet Example : 4RP01-D16-G12-D1-C1

1. 4RP01-D-16-G12-D1-C1 Series

2. 4RP01-**D**-16-G12-D1-C1 Control

Controls	A / B / D
----------	-----------



Proportional Amplifier & accessories			DIN Connectors		
Type	Model	Code	Type	Gray	Black
12 VDC (1 sol.)	EC01-AO1	701-00605-8	Standard (<250 V)	167-01007-8	167-01008-8
12 VDC (2 sol.)	EC01-AO2	701-00614-8	Red LED (15-30 VDC)	167-01100-8	167-01101-8
115/230 VAC	Power supply	701-00023-8			
Card Holder	-	701-00066-8			

