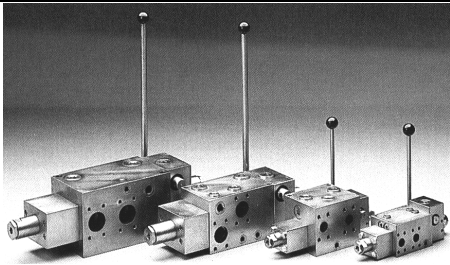


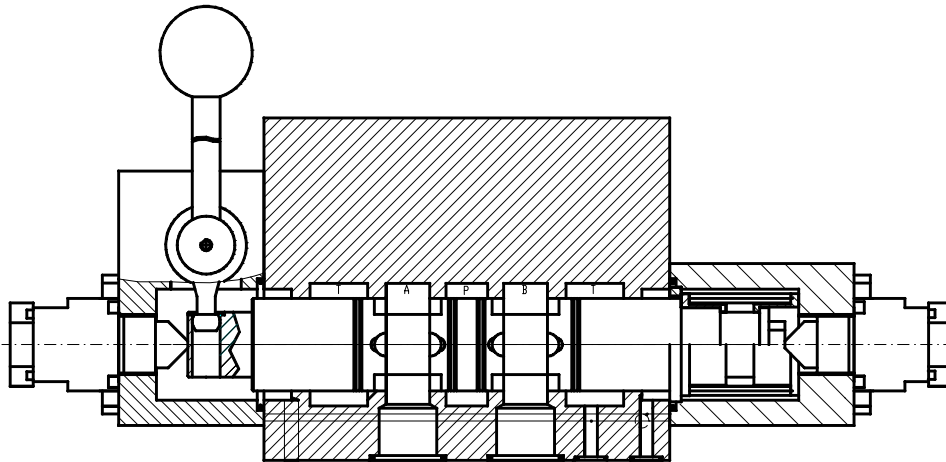
12. Marine Valves

Series Available Versions	Size	Maximum Flow (GPM)	Maximum Pressure (PSI)			Weight (lbs.)	Page
			A, B, P, T ports	L Drain port	SA, SB Pilot port ¹		
Manual Operation • WM43	20	66	5000	2000	5000	40	12 - 2
	30	119	5000	2000	5000	95 / 62	
Manual & Remote Control • WMH43	50	211	5000	700	5000	143	
	63	317	5000	700	5000	236	

¹ Recommended pilot pressure :
 NG20-50 : 150...440 PSI
 NG63 : 150...500 PSI



W Series
Marine
Directional Control Valves
 66 - 317 GPM - 5000 PSI



Key Sheet : Example : **WM43-P-30A01L3**

- 1. **WM43-P-30A01L3** Series
- 2. **WM43-P-30A01L3** Control

Manual hand lever	M
Manual hand lever + hydraulic remote control	MH
- 3. **WM43-P-30A01L3** 4-way - 3-position
- 4. **WM43-P-30A01L3** Mounting

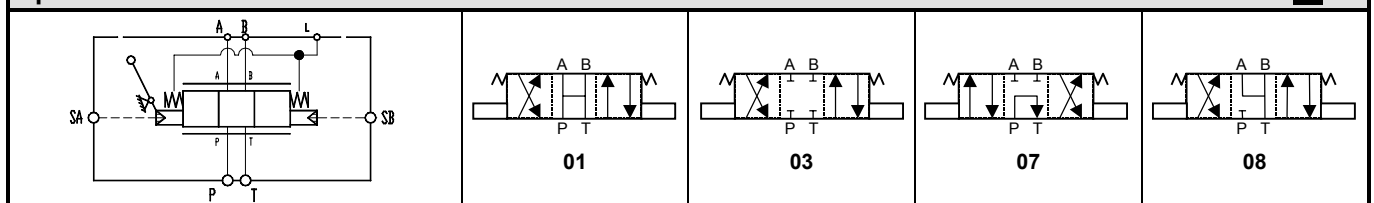
Subplate or manifold mounting	P
Flange mounted	R

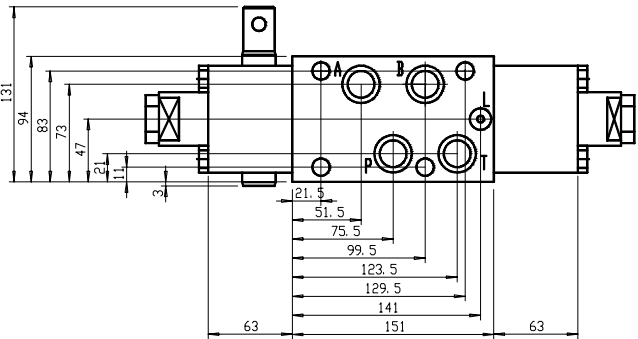
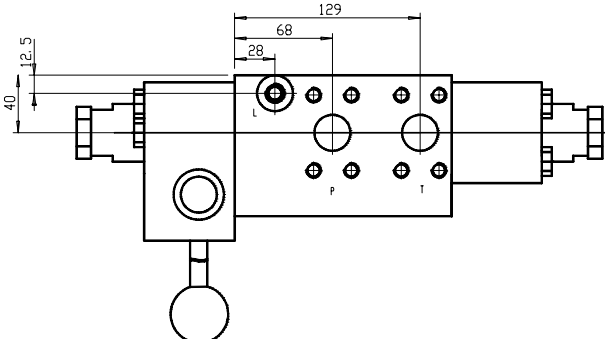
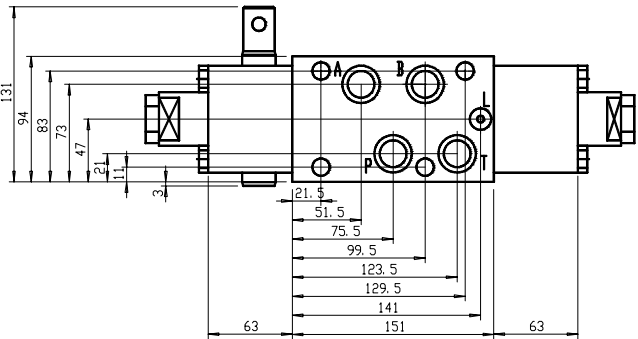
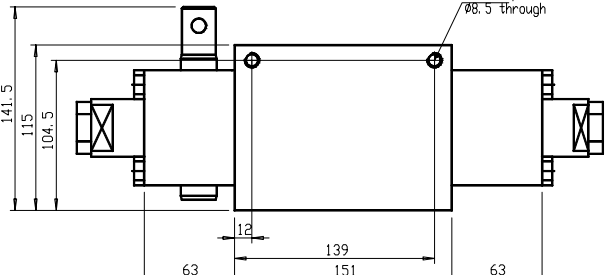
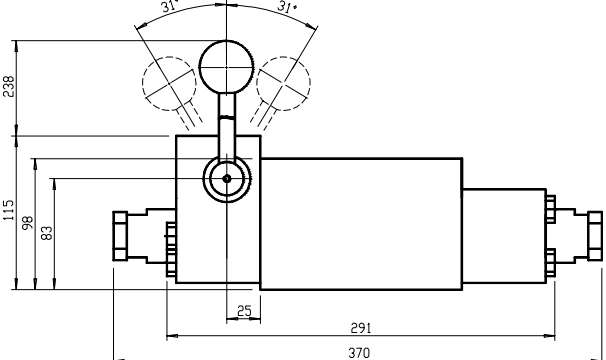
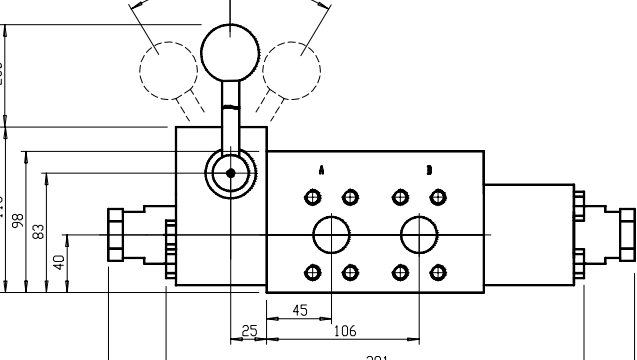
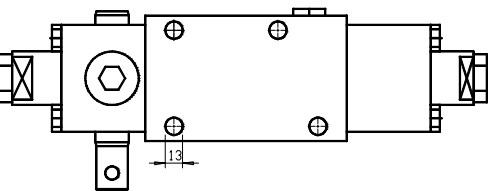

- 5. **WM43-P-30A01L3** Size

GPM	66	119	211	317
Series	20	30	50	63
- 6. **WM43-P-30A01L3** Design
- 7. **WM43-P-30A01L3** Spool
- 8. **WM43-P-30A01L3** SAE-flanges

Size	Mounting	SAE Flange option	Port Sizes					
			P & T	A & B	SA & SB	L	MP	MT
20	Flange (R)	L1	SAE-61, 1"		R 3/8"	R 1/4"	-	-
	Subplate or Manifold (P)	-	Ø 0.79		R 3/8"	Ø 0.20	-	-
30	Flange (R)	L3	SAE-61, 1 1/2"		R 3/8"	R 3/8"	-	-
		H2	SAE-62, 1 1/4"		R 3/8"	R 3/8"	-	-
	Subplate or Manifold (P)	L7	SAE-61, 2"	Ø 0.96	R 3/8"	Ø 0.28	Ø 0.28	Ø 0.32
-		-	Ø 1"	R 3/8"	Ø 0.24	-	-	
50	Flange (R)	L9	SAE-61, 2"	SAE-61, 1 1/2"	R 1/2"	R 3/8"	R 3/8"	R 3/4"
	Subplate or Manifold (P)	L7	SAE-61, 2"	Ø 1.42	R 1/2"	Ø 0.32	Ø 0.32	Ø 0.59
63	Flange (R)	L5	SAE-61, 2 1/2"		R 1/2"	R 3/8"	R 3/8"	R 3/4"
	Subplate or Manifold (P)	L8	SAE-61, 3"	Ø 1.77	R 1/2"	Ø 0.32	Ø 0.47	Ø 0.79

Spools **WM43-P-30A01L3**



W*43-P-20	W*43-R-20
 <p>Technical drawing showing the front view of the W*43-P-20 valve. Dimensions include: 131 (total height), 94 (height to top of valve), 83 (height to top of body), 73 (height to top of handle), 47 (height to top of solenoid), 21 (height to top of solenoid), 11 (height to top of solenoid), 3 (height to top of solenoid), 63 (width of handle), 21.5 (width of solenoid), 51.5 (width of solenoid), 75.5 (width of solenoid), 99.5 (width of solenoid), 123.5 (width of solenoid), 129.5 (width of solenoid), 141 (width of solenoid), 151 (width of body), and 63 (width of handle).</p>	 <p>Technical drawing showing the front view of the W*43-R-20 valve. Dimensions include: 129 (width of body), 68 (width of body), 28 (width of body), 40 (height of handle), and 12.5 (height of handle).</p>
 <p>Technical drawing showing the side view of the W*43-P-20 valve. Dimensions include: 131 (total height), 94 (height to top of valve), 83 (height to top of body), 73 (height to top of handle), 47 (height to top of solenoid), 21 (height to top of solenoid), 11 (height to top of solenoid), 3 (height to top of solenoid), 63 (width of handle), 21.5 (width of solenoid), 51.5 (width of solenoid), 75.5 (width of solenoid), 99.5 (width of solenoid), 123.5 (width of solenoid), 129.5 (width of solenoid), 141 (width of solenoid), 151 (width of body), and 63 (width of handle).</p>	 <p>Technical drawing showing the side view of the W*43-R-20 valve. Dimensions include: 141.5 (height to top of valve), 115 (height to top of body), 104.5 (height to top of handle), 12 (width of handle), 63 (width of handle), 139 (width of body), 151 (width of body), and 63 (width of handle). A note indicates: M10 deep 20 Ø8.5 through.</p>
 <p>Technical drawing showing the top view of the W*43-P-20 valve. Dimensions include: 238 (width of body), 115 (width of handle), 98 (width of handle), 83 (width of handle), 25 (width of handle), 291 (width of body), and 370 (width of body). Two 31° angles are indicated.</p>	 <p>Technical drawing showing the top view of the W*43-R-20 valve. Dimensions include: 238 (width of body), 115 (width of handle), 98 (width of handle), 83 (width of handle), 40 (width of handle), 25 (width of handle), 45 (width of handle), 106 (width of handle), 291 (width of body), and 370 (width of body). Two 31° angles are indicated.</p>
 <p>Technical drawing showing the bottom view of the W*43-P-20 valve. Dimensions include: 13 (width of handle).</p>	 <p>Technical drawing showing the bottom view of the W*43-R-20 valve. Dimensions include: 13 (width of handle).</p>

